

# Salvation Army Project

**project:** Salvation Army Entrance

**location:** North Vancouver, BC

**year:** 2011

**members involved:** Miriam Plishka, Lisa Parker

**partners:** North Shore Salvation Army

## summary:

The Salvation Army contacted Community Studio (CS) to design a new entryway off of West 12th Street to connect to the lower level of their facility. The main entrance of the building currently exists on Lonsdale Avenue and is highly visible to passersby. However, most people visiting this Salvation Army use the secondary entrance. This is because the lower level of their building contains a kitchen, which is no ordinary kitchen. It houses their New Hope Chef Training program “which provides aspiring chefs who otherwise would not have the opportunity with the technical skills necessary to find work in the culinary arts industry” (www.salvationarmy.ca, 2006). The fresh meals are then frozen and sold at a discount to low income families and the general public. The design produced by CS includes a new staircase, stepped seating for gathering and sitting outside, informal boulder seating, and an inspirational quote by William Booth, the founder of the Salvation Army, on the wall. The project was unveiled in spring 2011.

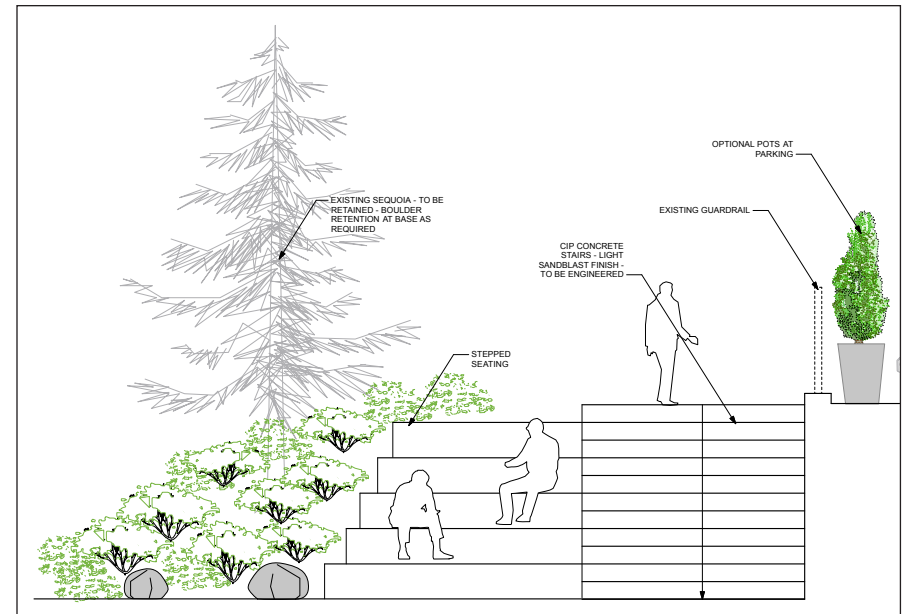


photo: North Shore Salvation Army